

A Dog's Day Series Educator Guide

A Dog's Day Series Educator Guide



BEFORE READING

Discuss the front and back covers, illustrations, and author/illustrator.

How does reviewing the cover details, summary, title, and illustrations help understand what you will be reading about?

What do you think this book will be about? Why?

Who is telling the story?

What do you know about dogs?

Create a class list of dog breeds. How are the breeds special? Do they have unique characteristics?

Why do you think that dogs are used to help and assist people?

Brainstorm different jobs that dogs can be good at.

How do dogs learn?

MINI-LESSON: Cause and Effect Relationships

The **cause** is the reason something happens; why.

The **effect** is the outcome or result.

EXAMPLES

Cause

I gave my dog a bone.

Bucky was protecting my family.

I gave my dog a treat every time he sat.

Effect

My dog was happy.

Bucky barked at the mail carrier.

My dog was trained to sit.

WHILE READING: Reading for meaning

As you read, think about the story elements.

What is the setting of the story?

What words tell you about the setting?

How does the setting affect the life of the characters?

Who are the two main characters? How do you know?

What do you learn about the characters?

How does author Catherine Stier introduce the idea of working dogs in the book?

Determine the central message and explain how it is conveyed through key details and plot points in the text.

What events in the story are particularly important? Why?

What challenges do the characters face in the story?

Describe the problem(s). How is it resolved?

What emotions does this story make you feel as you read?

Determine the meaning of words and phrases as they are used in the story. Distinguish literal from nonliteral language.

Why does author Catherine Stier include italics in the text? Why do you think she is emphasizing these particular words or phrases?

Does this book tell a story or give information?

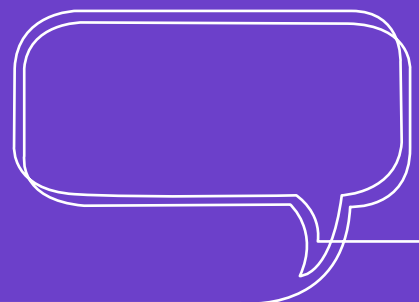
How does the author combine fiction and non-fiction elements throughout the book?

Distinguish your own point of view from that of the characters. How do you feel about the decisions the characters make?

Explain how the illustrations contribute to what is conveyed by the words in the story

How do they create mood, or emphasize aspects of a character or setting?

Why do you think Catherine Stier wrote this book?



AFTER READING: Making text-to-text connections

Characterization

Describe characters in a story. How do their traits, motivations, actions, and feelings contribute to the sequence of events?

How does Catherine Stier structure the book? Describe how each successive part builds on earlier sections as the plot moves towards resolution.

Comprehension Strategies

Give examples of cause and effect relationships from the book.

Find a part of the story when the main character is: happy, sad, afraid, surprised, grateful.

How does the main character (dog) “grow” throughout the book? What life lessons does he/she learn?

What can you learn from the main character?

Summarize each chapter. What is the main event?

Could this story really happen? What elements would you need to change for this story to be realistic?

Write a paragraph about a real working dog.

Research jobs that are performed by dogs or other animals. Share your findings in a digital presentation.

Real Working Dogs

How does the back matter (“About the Working Dog,” “Work Dogs in the Book” and acknowledgements) enhance your understanding of the subject matter?

Working dogs are quick to learn, intelligent, strong, watchful, loyal and love their work. Find examples from the story that prove this statement to be true.

How do dogs help people? How do people help dogs?

Why do you think the author gives a dog the ability to think and act like a person?

Literary devices

Personification is a type of metaphor and a common literary tool. It is when you assign the qualities of a person to something that is not human.

Find examples of personification in the story.

What other literary devices or figurative language does the author use to make the writing interesting?

Compare and contrast the themes, settings, and plots of stories written by the same author about the same or similar characters in books from a series.



Dog Name & Breed

Job Description

Supporting Characters

Setting

Problem & Solution

Theme/Central Message

Go back to the book and find examples of fiction and non-fiction elements.

Fiction

Non-Fiction

Book Review

Title: _____

Author: _____

Illustrator: _____

Genre: _____

Summary

My Favorite part was...

My Rating (color the stars for a 1-5 rating)



1

Learn more fun facts reading
A Dog's Day series!
www.catherinestier.com

- Dogs have guarded sheep and other animals since ancient times.
- Some LGDs may fend off coyotes, mountain lions, or even bears.
- Great Pyrenees and Anatolian shepherds make great LGDs.

Fun Facts
about
Livestock
Guardian Dogs
(LGDs)



2

Learn more fun facts reading
A Dog's Day series!
www.catherinestier.com

- Avy dogs can search an area as big as two football fields in 30 minutes.
- They can smell a human buried under several feet of snow.
- Avy dogs are often part of a Ski Patrol Team.

Fun Facts
about
Avalanche
Rescue Dogs
(Avy Dogs)



3

Learn more fun facts reading
A Dog's Day series!
www.catherinestier.com

- Since ancient times, guide dogs have helped people who were blind.
- At 14-18 months old, many future guide dogs attend special training schools.
- Guide dogs learn to alert human partners to curbs, stairs and even low tree branches.

Fun Facts
about
Guide Dogs



JAX

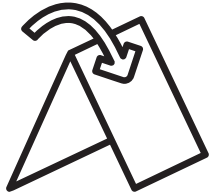
PROTECTOR OF THE RANCH
Livestock Guardian Dog

AVA

SEEKER IN THE SNOW
Avalanche Rescue Dog

SAMMY

TRUSTED GUIDE
Guide Dog



After cutting out cards, fold them and tape or glue them.

4

Learn more fun facts reading www.catherinestier.com
A Dog's Day series!

- Many different dogs, from Chihuahuas to giant mastiffs, have appeared in films and television shows.
- Trainers work with showbiz dogs to teach them the actions they perform on camera.
- Some showbiz dogs receive more fan mail than their human co-stars!

Fun Facts about Showbiz Dogs

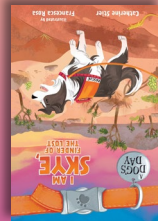


5

Learn more fun facts reading www.catherinestier.com
A Dog's Day series!

- SAR dogs use their incredible sense of smell to find lost or missing people.
- Many SAR dogs spend hundreds of hours training outdoors.
- SAR dogs can help locate people after a natural disaster, like a hurricane or earthquake.

Fun Facts about Search & Rescue Dogs (SAR)



9

Learn more fun facts reading www.catherinestier.com
A Dog's Day series!

- Beagle Brigade dogs work at U.S. airports, sniffing out foods travelers aren't allowed to bring into the country.
- Many Beagle Brigade dogs are rescued from shelters.
- Beagles were chosen for this work for their friendliness and amazing sense of smell.

Fun Facts about Beagle Brigade Detector Dogs



BELLA

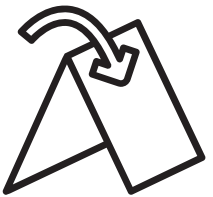
STAR OF THE SHOW
Showbiz Dog

SKYE

FINDER OF THE LOST
Search and Rescue Dog

TUCKER

DETECTION EXPERT
Beagle Brigade Detector Dog



After cutting out cards, fold them and tape or glue them.